

ANDINO



MONTACARGAS
ELÉCTRICO
1.5 - 2.0 Tonne

Características

■ El sistema de 80 voltios ofrece un rendimiento potente

Los motores de doble accionamiento de 80 voltios ofrecen un mayor ahorro y mejor eficiencia energética en el sistema nuevo de nuestro AEC15-20W3Li, dando así un uso de 4-6 horas de batería por carga.

■ Tamaño compacto

Nuestra serie AEC15-20W3Li te ofrece un radio de giro reducido, 1450 mm en nuestro AEC15W3Li, y 1580 mm en nuestro AEC20W3Li.

■ Área de cabina amplia

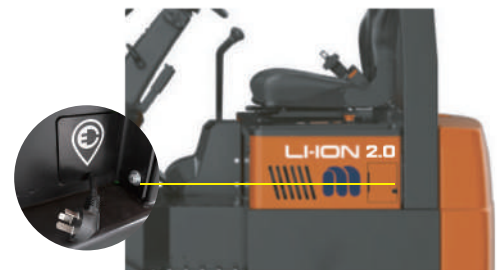
Gracias al tamaño compacto de la batería de litio y la configuración ergonómica de las palancas de control y el pedal del freno, la cabina reducida ofrece un amplio espacio de 394 mm para mejor comodidad y funcionamiento.

■ Tecnología de lones de litio

La serie AEC15-20W3Li viene con un cargador integrado monofásico de 35 Ah y su enchufe de 16 amperios que permite cargarla en cualquier toma de corriente, opcional cuenta con un cargador de 130Ah externo Trifásico, permitiendo recargar la batería en una hora y media a su capacidad completa.

■ Un mejor diseño de mástil para mayor visibilidad y estabilidad

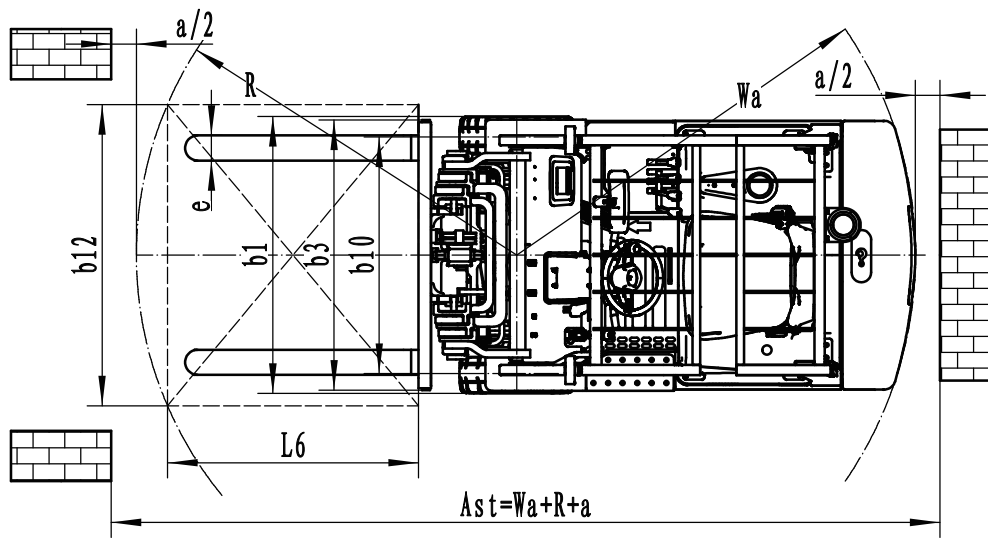
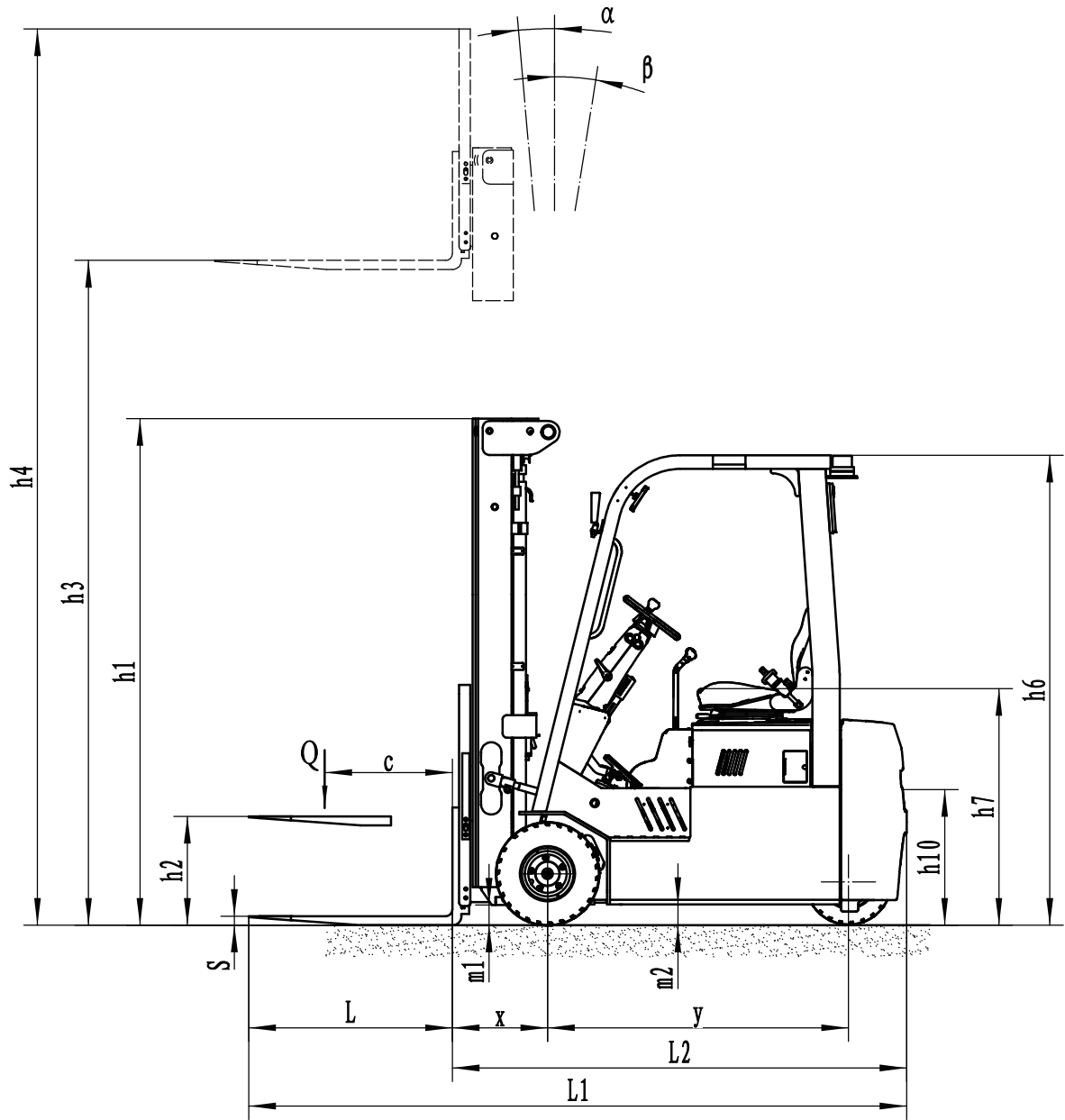
El mástil de la serie AEC15-20W3Li ofrece la mejor visibilidad panorámica y una gran estabilidad con menos oscilaciones, incluso con carga completa.





AEC15/20W3LI

				MEGALIFT	MEGALIFT	
				AEC15W3Li	AEC20W3Li	
Distinguishing mark	1.1	Manufacturer				
	1.2	Model designation				
	1.3	Drive				
	1.4	Operator type				
	1.5	Load capacity	Q	kg	1500	2000
	1.6	Load center distance	c	mm	500	500
	1.8	Load distance, centre of drive axle to fork	x	mm	—	—
	1.9	Wheelbase	y	mm	1230	1330
	Service weight	2.1	Service weight			
2.2		Axle loading, laden front/rear				
2.3		Axle loading, unladen front/rear				
Tyre/chassis	3.1	Tyre type				
	3.2	Tyre size, front				
	3.3	Tyre size, rear				
	3.5	Wheels, number front/rear (x=drive wheels)				
	3.6	Tread width, front	b ₁₀	mm	943	969
	3.7	Tread width, rear	b ₁₁	mm	175	175
Dimensions	4.1	Tilt of mast/fork carriage forward/backward	α/β	°	6/6	6/6
	4.2	Retracted mast height	h ₁	mm	2075	2075
	4.3	Free lift	h ₂	mm	100	100
	4.4	Lift height	h ₃	mm	3000	3000
	4.5	Height, mast extended	h ₄	mm	4055	4055
	4.7	Height of overhead guard (cabin)	h ₆	mm	2078	2078
	4.8	Seat height/standing height	h ₇	mm	1050	1050
	4.12	Tow coupling height	h ₁₀	mm	600	600
	4.19	Overall length	l ₁	mm	2733	3020
	4.20	Length to face of forks	l ₂	mm	1813	1950
	4.21	Overall width	b/b ₂	mm	1070	1170
	4.22	Fork dimensions	s x e x l	mm	40X100X920	40X122X1070
	4.23	A, B Fork carriage class/type A, B			2A	2A
	4.24	Fork carriage width	b ₃	mm	1040	1040
	4.31	Ground clearance, laden, below mast	m ₁	mm	89	89
	4.32	Ground clearance, center of wheelbase	m ₂	mm	92	92
	4.34.1	Aisle width for pallets 1000x1200 crossways	Ast	mm	3175	3315
	4.34.2	Aisle width for pallets 800x1200 lengthways	Ast	mm	3300	3435
	4.35	Turning radius	Wa	mm	1450	1585
	Performance data	5.1	Travel speed, laden/unladen			
5.2		Lifting speed, laden/unladen				
5.3		Lowering speed, laden/unladen				
5.5		Drawbar pull, laden/unladen				
5.6		Max. drawbar pull, laden/unladen				
5.8		Max. gradeability, laden/unladen				
Electric-engine	5.10	Service brake				
	5.11	Parking brake				
	6.1	Drive motor rating S2 60 min				
	6.2	Lift motor rating at S3 15%				
	6.4	Battery voltage/nominal capacity				
	6.5	Battery weight				
	6.6	Energy consumption according to DIN EN 16796				
	6.7	Turnover output according to VDI 2198				
Drive/lift mechanism	6.8	Turnover efficiency according to VDI 2198				
	8.1	Type of drive control				
	10.1	Operating pressure for attachments				
	10.2	Oil flow for attachments				
	10.5	Steering design				
	10.7	Sound pressure level at the driver's ear				
15.1	Charger output current					





Opciones del mástil

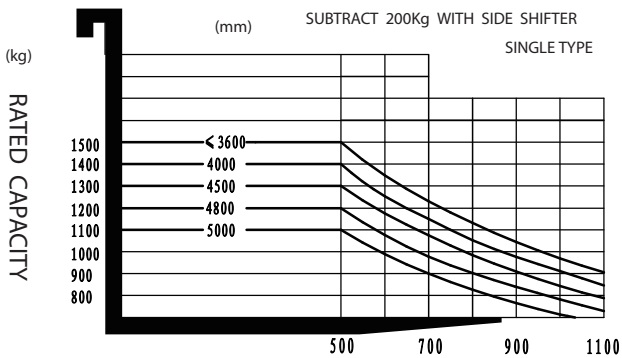
AEC15W3Li

Mast types	Lift height (h3) mm	Height, Mast			Height, Free lift(h2)	
		Height, mast lowered(h1) mm	Height, mast extended(h4)		No backrest mm	With backrest mm
			No backrest mm	With backrest mm		
2-Standard Mast	3000	2075	3740	4055	100	100
	3600	2375	4340	4655	100	100
	4000	2455	4740	5055	100	100
3-Free Mast	4500	2140	5240	5555	1430	1115
	4800	2240	5540	5855	1530	1215
	5000	2305	5740	6055	1595	1280

AEC20W3Li

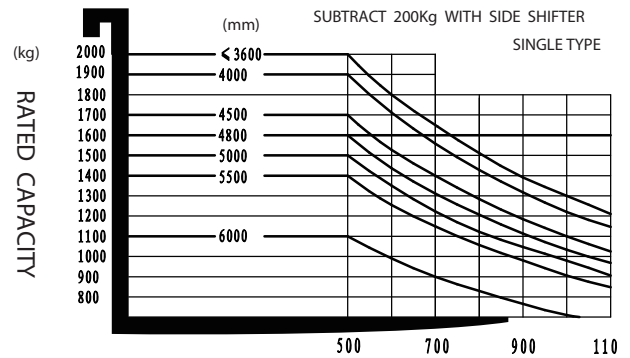
Mast types	Lift height (h3) mm	Height, Mast			Height, Free lift(h2)	
		Height, mast lowered(h1) mm	Height, mast extended(h4)		No backrest mm	With backrest mm
			No backrest mm	With backrest mm		
2-Standard Mast	3000	2075	3740	4055	100	100
	3600	2375	4340	4655	100	100
	4000	2455	4740	5055	100	100
3-Free Mast	4500	2140	5240	5555	1430	1115
	4800	2240	5540	5855	1530	1215
	5000	2305	5740	6055	1595	1280
	5500	2475	6240	6555	1765	1450
	6000	2690	6740	7055	1980	1665

RATED CAPACITIES AND LOAD CENTERS GRAPH



AEC15W3Li LOAD CENTRE POSITION (mm)

RATED CAPACITIES AND LOAD CENTERS GRAPH



AEC20W3Li LOAD CENTRE POSITION (mm)

Opciones

No.	Optional items	AE15W3Li
1.1	Fork dimension	●100*40*920○100*40*1070○100*40*1100○100*40*1150 ○100*40*1220○100*40*1370○100*40*1520○100*40*1800
1.4	Fork carriage width	●1040mm○Yes and can be customized
1.5	Fork carriage height	●1067mm (42in) ○1220mm (48in) ○1520mm (60in) ○Yes and can be customized
2.5	Front wheel material	●Solid rubber○Non-marking solid
2.6	Rear wheel material	●Solid rubber○Non-marking solid
2.7	Battery capacity	●150Ah ○205Ah
2.8	Charger	●80V-35A single-phase internal ○80V-60A three-phase internal ○80V-35A single-phase external ○80V-65A three-phase external ○80V-130A three-phase external
2.9	Battery indicator	●With time
2.10	Seat type	●Regular○Premium○Suspension○Suspension + seatbelt logic switch
2.11	Attachments	●No○Built-in sideshifter○External shifter○Fork positioner
2.13	Traction pin	●Yes
2.14	Electrostatic chain	●Yes
3.5	Front lamp	●LED
3.6	Rear lamp	●No○LED
3.7	Warning lamp	●Yes
3.8	Steering lamp	●Yes
3.9	Blue lamp	●No○2 front○1 rear○2 front + 1 rear
3.10	Area warning lamp	●No○Red, 1 left + 1 right
3.11	Rearview mirror	●1 rearview mirror○Add rearview mirrors on both sides
3.12	Buzzer	●Yes
3.17	OPS system	●Yes
3.23	Telematics	●No○Yes and not customized
4.3	Cabin	●No○Basic semi-enclosed cabin○Upgrade semi-enclosed cabin○Full cabin
4.9	Heater	●No○Yes and not customized

Note : ●Standard ○ Optional - Inconformity



No.	Optional items	AE20W3Li
1.1	Fork dimension	●122*40*920○122*40*1070○122*40*1150○122*40*1220 ○122*40*1370○122*40*1500○122*40*1600○122*40*1700 ○122*40*1820○122*40*1900○122*40*2000○122*40*2200
1.4	Fork carriage width	●1040mm○Yes and can be customized
1.5	Fork carriage height	●1067mm (42in) ○1220mm (48in) ○1520mm (60in) ○Yes and can be customized
2.5	Front wheel material	●Solid rubber○Non-marking solid
2.6	Rear wheel material	●Solid rubber○Non-marking solid
2.7	Battery capacity	●150Ah ○205Ah
2.8	Charger	●80V-35A single-phase internal○80V-60A three-phase internal ○80V-35A single-phase external○80V-65A three-phase external ○80V-130A three-phase external
2.9	Battery indicator	●With time
2.10	Seat type	●Regular○Premium○Suspension○Suspension + seatbelt logic switch
2.11	Attachments	●No○Built-in sideshifter○External shifter○Fork positioner
2.13	Traction pin	●Yes
2.14	Electrostatic chain	●Yes
3.5	Front lamp	●LED
3.6	Rear lamp	●No○LED
3.7	Warning lamp	●Yes
3.8	Steering lamp	●Yes
3.9	Blue lamp	●No○2 front○1 rear○2 front + 1 rear
3.10	Area warning lamp	●No○Red, 1 left + 1 right
3.11	Rearview mirror	●1 rearview mirror○Add rearview mirrors on both sides
3.12	Buzzer	●Yes
3.17	OPS system	●Yes
3.23	Telematics	●No○Yes and not customized
4.3	Cabin	●No○Basic semi-enclosed cabin○Upgrade semi-enclosed cabin○Full cabin
4.9	Heater	●No○Yes and not customized
Note : ●Standard ○ Optional - Inconformity		



Dimensión



AE15W3Li

Longitud hasta la cara de las horquillas: 1813 mm (L2)

Ancho total: 1070mm(b1/b2)



AE20W3Li

Longitud hasta la cara de las horquillas: 1950 mm (L2)

Ancho total: 1170mm(b1/b2)